

Protect. Enhance. Outperform.

ARCHITECTURAL FINISHES

ACR Textured Metallic

METALLIC ACCENT FINISH SYSTEM



ACR Textured Metallic | Accent Finish System

Replicate the look of ACM Panels at a fraction of the cost

What is “ACR Textured Metallic”?

Specially designed finish coating system, available in several shimmering metallic colours and which is intended to replicate textured metal façade surfaces when applied over the base coat of our Durex® EIF Systems.

Durex® ACR – TEXTURED METALLIC is ideal for creating distinctive architectural features on exterior/interior wall surfaces and can be applied on new and existing buildings. It provides a very flat textured, yet sparkling surface, incorporating reveals and control joints, providing the designer the flexibility to replicate the appearance of panelized metallic façades.

Where can ACR Textured Metallic be applied?

- Exterior and interior walls
- New constructions or retrofits
- Exceptional option for hotels, healthcare, community centers, and commercial or retail buildings that require a premium accent façade

Benefits of ACR Textured Metallic

- Reflective, sheen, textured metallic finish
- Lightweight design significantly lowers carbon footprint
- Cost-effective alternative to prefabricated ACM panels
- Part of a Continuous Insulation EIF System
- Monolithic design over a 3 m² (32 ft²) surface area, offering an array of architectural possibilities
- Exceptional durability
- Unique optical and aesthetical effects through broad range of colours
- Weather resistant with high water repellency
- High water vapour transmission (very breathable)
- Low dirt-pick-up resistance
- High colour stability and UV resistance
- Installed by skilled and trained contractors





ACR Textured Metallic

System Overview

PAGE 4

Design Guidelines

Best practices for superior results

PAGE 5

Application Conditions

Surface conditions and tolerances

PAGE 6

Application Recommendations

Tips to ensure proper installation

PAGE 7

Application Standards

For ACR Textured Metallic

PAGE 8

Application Method

For ACR Textured Metallic

PAGE 9

ACR Colour Guide

Standard and available colours

PAGE 10

Durex® ACR Textured Metallic

Reflective and sheen accent finish



DESCRIPTION

Hotels, healthcare, community centers, and commercial or retail buildings that require a premium metallic-like accent façade

FEATURES

Textured, reflective, metallic finish

Exceptional durability

Unique optical and aesthetical effects through broad range of colours

Weather resistant with high water repellency

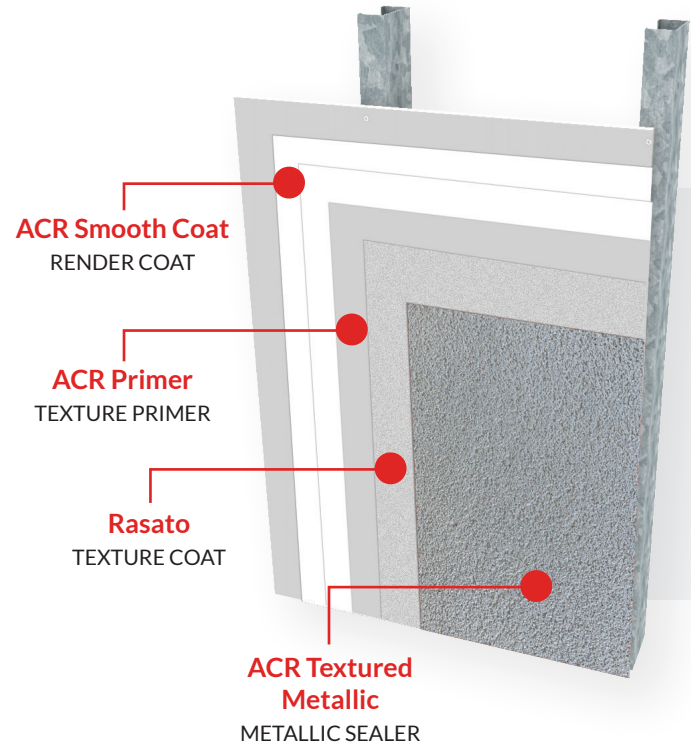
High water vapour transmission (very breathable)

Low dirt-pick-up resistance

High colour stability and UV resistance

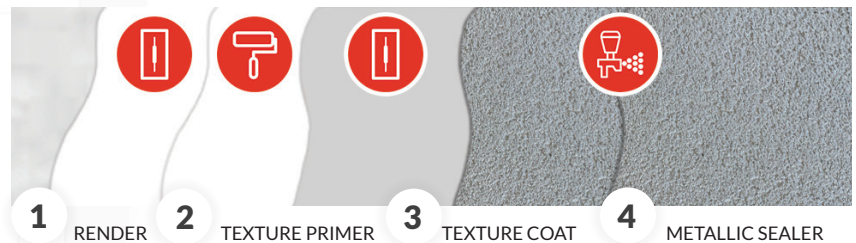
COLOUR AVAILABILITY

Tinted



GREEN DESIGN

Features a lightweight design with a significantly lowered carbon footprint



COMPONENT	PRODUCT	MIX DESIGN	COVERAGE	APPLICATION TEMPERATURE
Base Coat	ACR systems are compatible with any Durex® EIFS Wall System. Please contact your Durabond Representative for additional support.			
Render Coat	ACR Smooth Coat (Trowel Applied)	1 Bag ACR Smooth Coat 5.5 L potable Water	100 ft ² / Bag @ 1/16" thick per coat 9.3 m ² / Bag @ 1.6 mm thick per coat (minimum 1 coat required)	5°C to 40°C
Texture Primer	ACR Primer (Roller Applied)	Single component, no mixing required. Stir prior to use.	200 ft ² / Gal per coat 14 m ² / Liter per coat (1 coat required, 2 coats optional)	5°C to 40°C
Finish Coat	Rasato (Trowel Applied)	Single component, no mixing required. Stir prior to use.	150 ft ² / Pail per coat 14 m ² / Pail per coat (1 coat required, 2 coats optional)	5°C to 40°C
Sealer	ACR Textured Metallic (Spray Applied)	Single component, no mixing required. Stir prior to use.	300 ft ² / Gal per coat 6.2 m ² / Liter per coat (2 coats required)	5°C to 40°C

Design Guidelines

Best practices for superior results

PANELIZED PATTERN DESIGN APPROACH

Durex® ACR systems require to be installed in “panelized pattern” separated by reveals with limited panel size. This is best coordinated at the design stage of the project.

REVEALS ALIGNMENT

Introduce panelized pattern design by laying out the reveal pattern in alignment with other façade features / components such as fenestration etc.

DETAILED LAYOUT OF REVEALS

Form part of the design and specification documents. Do not leave reveal layout up to the installer.

TRAINED SKILLED INSTALLERS

Durex® ACR systems should be installed only by qualified trained installers.

INSTALLATION PROCEDURES

Installation process shall strictly follow the recommended procedures – no exceptions – no substitutions.

MAXIMUM PANEL SIZE

Panel size should be kept to a maximum 3m² (32 ft²) area per panel, with maximum dimension in any one direction of 2.44m (8 ft).

QUALITY CONTROL AT ALL STAGES

Best results are achieved when strict quality control measures are implemented throughout all the phases, starting from design through to complete installation.



Application Conditions

Surface preparations and tolerance guidelines

Durex® ACR Textured Metallic finish system is ideally intended to be used over the base coat of any of Durabond's Durex® EIFS. Durex® ACR Textured Metallic can also be applied over the base coat of direct applied stucco systems, however strong consideration must be given to the design and layout of control joints, breaks and reveals to maximize the desired aesthetics of the subject wall.

SURFACE PREPARATIONS

The condition of the base coat surface shall be characterized by explicit tolerances in relation to plumbness, straightness and bowing, with no surface depressions, cavities and/or undulations.

The following tolerances shall be enforced:

DEFLECTION OF WALL

- Deflection of wall shall be 1/360 or 2 mm (3/32"), whichever is smaller.

PLUMBNESS LEVEL

- The wall shall be considered defective and in need for adjustments prior to the application of the basecoat if it differs in level of more than ± 4 mm (5/32") in any 2 m (6.5 ft) length.
- Measurement of deviation from horizontal level shall be $\leq \pm 3$ mm (1/8") in 3 m (10 ft).
- Measurement of deviation from vertical level shall be $\leq \pm 3$ mm (1/8") in 3 m (10 ft).
- Measurement of bow at any location shall be $\leq \pm 4$ mm (5/32") in any 2 m (6.5 ft).

FLATNESS (HORIZONTAL/VERTICAL)

- Measurements of deviation from Horizontal shall be $\leq \pm 3$ mm (1/8") in 10 m (32 ft).
- Measurement of bow (Horizontal flatness) shall be $\leq \pm 4$ mm (5/32") in any 2 m (6.5 ft).
- Measurement of bow (Vertical Flatness) shall be $\leq \pm 4$ mm (5/32") in any 2 m (6.5 ft).

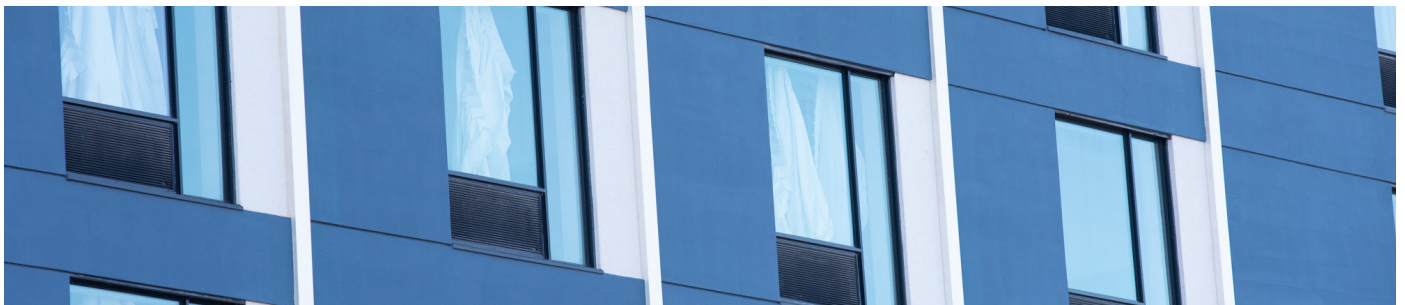
SURFACE DEPRESSIONS

- Surface depression at all component interfaces shall be $\leq \pm 1$ mm (1/32") in any 0.3 m (1 ft).

NO OFFSETS, BULGES AT INTERFACES

SURFACE UNDULATIONS

- Measurement of surface undulations vertically and horizontally, at all interfaces shall be $\leq \pm 1$ mm (1/32") in any 0.3 m (1 ft).



IMPORTANT NOTE: The application of Accent Finish Coating Systems requires extra work, skills, and attention at all levels of surface conditioning and application to achieve the desired aesthetic result. The minimum extra steps required to achieve the desired aesthetic results need to be acknowledged by the specifier, contractor, and applicator.

Application Overview

For ACR Textured Metallic

ACR SMOOTH COAT APPLICATION

Apply Durex® ACR Smooth Coat, using a stainless steel trowel in a minimum of 2-coat application with the first coat allowed to harden and cure prior to the application of successive coats (if required).

ACR TEXTURE PRIMER APPLICATION

Apply Durex® ACR Primer Coat in 1-coat application using a brush, roller or spray and allow to dry.

DUREX® RASATO APPLICATION

Durex® Rasato is applied over Durex® ACR Primer Coat using a steel trowel to one panel area at a time. While material is still wet lightly float with a plastic float to an even texture throughout. Allow to fully dry before application of final coat.

NOTE: The Durex® Rasato sand grain texture has been selected to create the ideal textured substrate for the Durex® Textured Metallic finish. Other textures can be substituted, if desired. Contact your Durabond Representative for more specific recommendations.

DUREX® TEXTURED METALLIC APPLICATION

Apply 2 individual coats of Durex® Textured Metallic using an airless spray. Allow each coat to dry prior to the application of the successive coat. A minimum of 2 coats are recommended, but for a finer finish additional individual coats can be applied.

Best results are achieved when the Durex® Textured Metallic is applied by spray. It can also be applied by low pile roller or fine bristle brush, however such an application will require more skill and care in order to achieve the desired finish. In such cases a sample application shall be conducted to ensure that the desired finish is achieved.

NOTE: The Durex® ACR TEXTURED METALLIC is a high quality fine accent finish. Best results can only be achieved when the applications are conducted by trained skilled applicators. The enclosed short application procedures are for guideline purposes only and are not intended to be detailed instructions for un-trained applicators. Consult with Durabond Representatives for more specific recommendations.



Application Standards

For ACR Textured Metallic

- The Durex® ACR-TEXTURED METALLIC finish shall consist of 2-coats Durex® ACR-Smooth Coat followed by 1-coat of Durex® ACR-Primer, 1-coat of Durex® Rustico, and 2-coats of Durex® Cromatex to achieve the desired appearance.
- All proper rectification of tolerances and conditioning of the surfaces shall be made prior to application of the Durex® ACR-TEXTURED METALLIC finish coating system.
- Flatness of application surface shall be measured by a 3 m (10 ft) straightedge which can be placed anywhere on the wall in any direction.
- The substrate's basecoat shall be thoroughly cured for at least 3 days and dry for at least 24 hours.
- The substrate shall be free from ice, snow, dew and/or frost.
- To control the final texture, the size of the specified work surface area should be broken up in manageable areas not exceeding 3 m² (32 ft²) with no dimension, vertically or horizontally, exceeding 2.44 m (8 ft).
- The application of all components of the Durex® ACR-TEXTURED METALLIC finish coating system shall completely cover the delineated surface area before any interruption of application.
- Durex® ACR-Smooth Coat shall be floated properly. Float marks shall not be permitted.
- Durex® ACR-Smooth Coat shall be applied by a team of at least 2 tradesmen. While one tradesman spreads the Durex® ACR-Smooth Coat coat on the substrate, the second tradesman should float the freshly applied Durex® ACR-Smooth Coat to the desired texture.
- Durex® ACR-Smooth Coat shall be applied to a smooth, flat and level finish.
- Apply Durex® ACR-Smooth Coat to the recommended thickness and surface area coverage.
- The two 2-coats of Durex® ACR-Smooth Coat shall be troweled onto the wall with upward strokes. Smooth the freshly applied material into a tight uniform finish with a steel trowel.
- To achieve a consistent surface, wet edges shall be maintained in the application of Durex® ACR-Smooth Coat. There shall be no bare or starved areas in Durex® ACR-Smooth Coat or in the consecutive coating application.
- Ridges in Durex® ACR-Smooth Coat application and in the consecutive finishing coats application shall not be permitted.
- Flatten the Durex® ACR-Smooth Coat with steel trowel or plastic float before it dries.
- Cold joints shall not be permitted.
- Allow a minimum of 24 hours for the curing of Durex® ACR-Smooth Coat.
- Apply Durex® ACR-Primer of matching colour to Durex® Rasato, over the cured and dried Durex® ACR-Smooth Coat and allow to dry for approximately one (1) hour.
- Apply Durex® Rasato over the dry Durex® ACR Primer using a stainless steel trowel and plastic float.
- Allow a minimum of 24 hours for Durex® Rasato to cure and dry prior to the application of the consecutive coats.
- Apply a minimum of 2-coats of Durex® ACR Textured Metallic using spray equipment and allow to dry for a minimum of 24 hours.
- Protect freshly applied finish system from inclement weather conditions until the coating has fully set and cured.
- Prevent, rapid and uneven evaporation.
- Application techniques for all coatings must be consistent over the entire area to create a uniform look.
- Sprayed applications shall be carried out longitudinally as well as laterally over the substrate. Over spraying shall be avoided in order to avoid raised specks around the sprayed area that would give a halo effect on the smooth surface.
- The use of proper tools play a major role in the quality of the finished surfaces. Please refer to Durabond's specified tools.
- Any finished section of the wall should maintain a similarity throughout the wall when viewed in totality.
- Project specifications shall coincide with product specifications.
- Consult Durabond's technical team for expert advice and support during the application phase.

Application Method

Ensure proper application of ACR Textured Metallic

DESCRIPTION

Durex® ACR – TEXTURED METALLIC is a specially designed architectural finish system that is intended to replicate textured metal façade surfaces available in several shimmering metallic colours, when applied over the base coat of our Durex® EIF Systems. Durex® ACR – TEXTURED METALLIC is ideal for creating distinctive architectural features on exterior/interior wall surfaces and can be applied on new and existing buildings. It provides a very flat textured yet metallic sparkling surface incorporating reveals and control joints, affording the designer the flexibility to replicate the appearance of panelized facades.

SUBSTRATE REQUIREMENTS

It is an ideal option for application over the base coat of our Durex® EIF Systems. Durex® ACR TEXTURED METALLIC can also be applied over the base coat of direct applied stucco systems, however strong consideration must be given to the design and layout of control joints, breaks and reveals to maximize the desired aesthetics of the subject wall.

DESIGN & APPLICATION GUIDELINES

- **Introduction at Design Stage** – best results are achieved when system is introduced at design stage
- **Panelized Pattern Design Approach** – Durex® ACR systems require to be installed in “panelized pattern” separated by reveals with limited panel size. This is best coordinated at the design stage of the project.
- **Reveals Alignment with Other Architectural Features** – introduce panelized pattern design by laying out the reveal pattern in alignment with other façade features / components such as fenestration etc.
- **Detailed Layout of Reveals** – Form part of the design and specification documents. Do not leave reveal layout up to the installer.
- **Trained Skilled Installers** – Durex® ACR systems should be installed only by qualified trained installers.
- **Installation Procedures** – installation process shall strictly follow the recommended procedures – no exceptions – no substitutions.
- **Maximum Panel Size** – panel size to be kept to a maximum 3m² (32 ft²) area per panel, with maximum dimension in any one direction of 2.44m (8'-0").
- **Quality Control at All Stages** – Best results are achieved when strict quality control measures are implemented throughout all the phases, starting from design through to complete installation.

APPLICATION STEPS

1. Apply Durex® ACR-Smooth Coat, using a stainless steel trowel in a minimum of 1-coat application with the first coat allowed to harden and cure prior to the application of successive coats (if required).
2. Apply Durex® ACR- Primer Coat in 1-coat application using a brush, roller or spray and allow to dry.
3. Application of Durex® Rasato sand grain texture – Durex® Rasato is applied over Durex® ACR-Primer Coat using a steel trowel to one panel area at a time. While material is still wet lightly float with a plastic float to an even texture throughout. Allow to fully dry before application of final coat. NOTE: The Durex® Rasato sand grain texture has been selected to create the ideal textured substrate for the Durex® ACR Textured Metallic finish. Other textures can be substituted, if desired. Contact your Durabond Representative for more specific recommendations.
4. Apply 2 individual coats of Durex® ACR Textured Metallic finish coat using an airless spray. Allow each coat to dry prior to the application of the successive coat. A minimum of 2 coats are recommended, but for a finer finish additional individual coats can be applied. NOTE: best results are achieved when the Durex® ACR Textured Metallic is applied by spray. It can also be applied by low pile roller or fine bristle brush, however such an application will require more skill and care in order to achieve the desired finish. In such cases a sample application shall be conducted to ensure that the desired finish is achieved.

COMPONENT	PRODUCT	MIX DESIGN	COVERAGE	APPLICATION TEMPERATURE
Render Coat	ACR Smooth Coat	1 Bag ACR Smooth Coat 5.5 L potable Water	100 ft ² / Bag @ 1/16" thick per coat 9.3 m ² / Bag @ 1.6 mm thick per coat (minimum 1 coat required)	5°C to 40°C
Texture Primer	ACR Primer	Single component, no mixing required. Stir prior to use.	200 ft ² / Gal per coat 14 m ² / Liter per coat (1 coat required, 2 coats optional)	5°C to 40°C
Finish Coat	Rasato	Single component, no mixing required. Stir prior to use.	150 ft ² / Pail per coat 14 m ² / Pail per coat (1 coat required, 2 coats optional)	5°C to 40°C
Sealer	ACR Textured Metallic	Single component, no mixing required. Stir prior to use.	300 ft ² / Gal per coat 6.2 m ² / Liter per coat (2 coat required)	5°C to 40°C

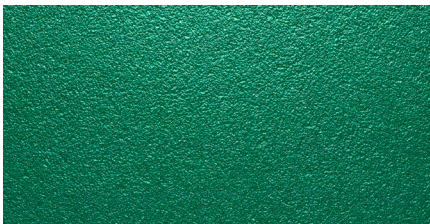
Durex[®] ACR Textured Metallic

Durex[®] ACR – TEXTURED METALLIC is ideal for creating distinctive architectural features on exterior/interior wall surfaces and can be applied on new and existing buildings. It provides a very flat textured, yet sparkling surface, incorporating reveals and control joints, providing the designer the flexibility to replicate the appearance of panelized metallic façades.

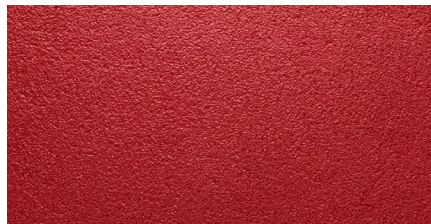


COLOUR:
Metallic Mist

Printed samples represent actual finish colours as closely as possible. Colour appearance may vary by texture, lighting and method of application. Always request a textured sample before ordering.



TRU GREEN - KG



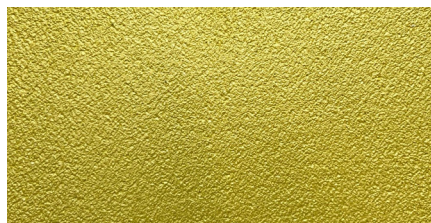
NEON RED - KG



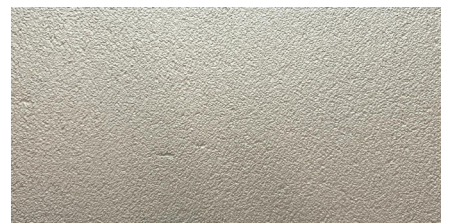
BERMUDA BLUE - KG



EXOTIC VIOLET - KG



BRIGHT YELLOW - KG



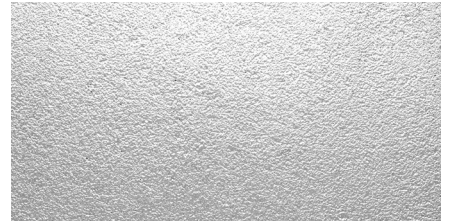
WASHINGTON WHITE



LIGHT SILVER



SILVER DOLLAR



SILVER



DARK SILVER



COSMIC GREY



NS CHAR GREY



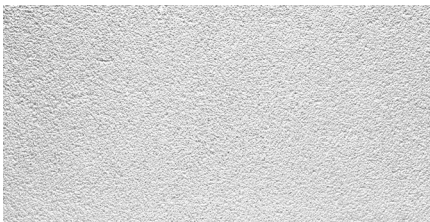
CHARCOAL GREY



BLACK LAB



BLACK MAGIC



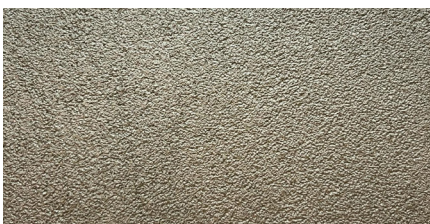
PLATINUM



METALLIC MIST



MOCCA-CINO



TARNISHED BRONZE



BRONZE



COPPER



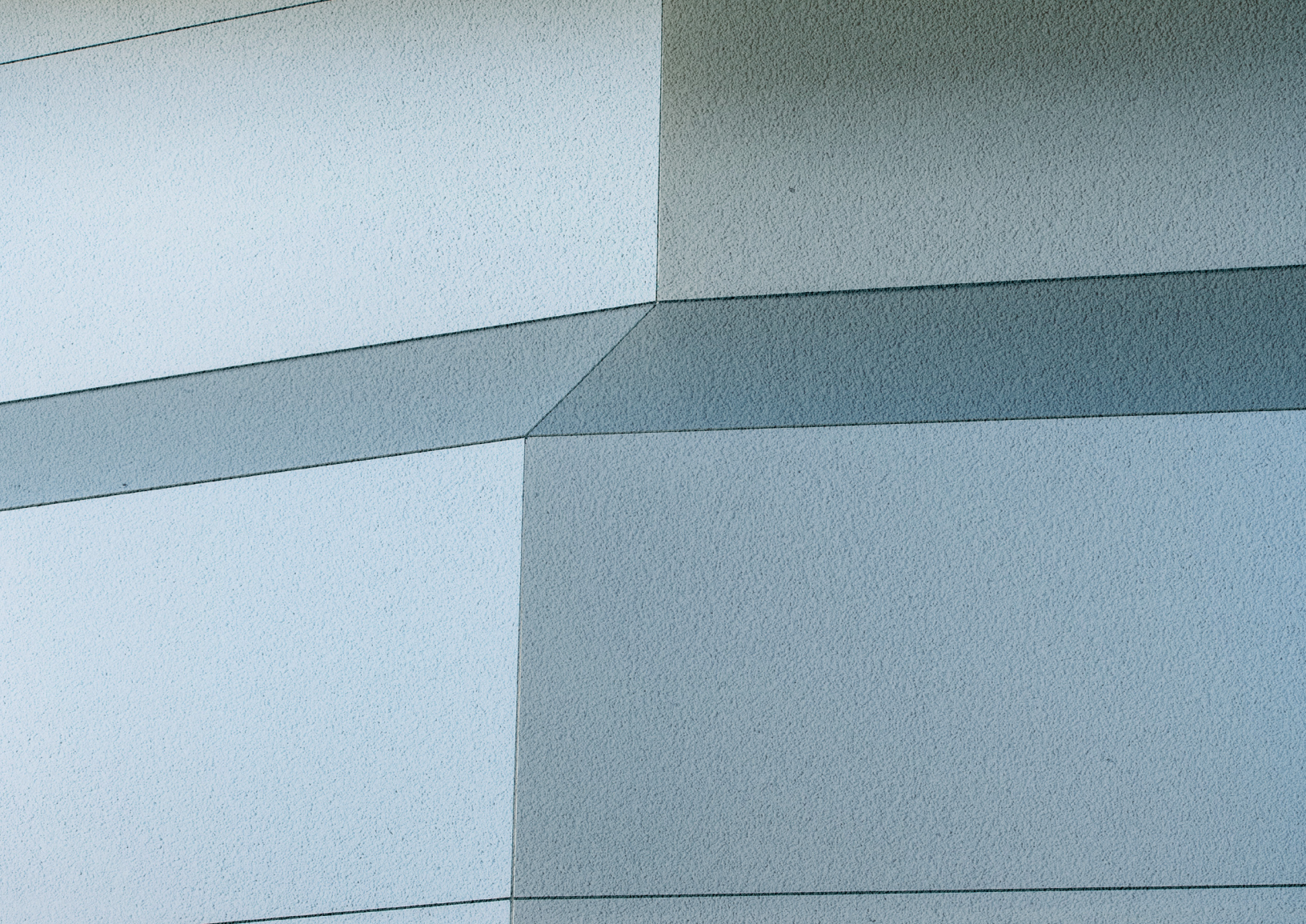
BURNT COPPER



GOLD



BRASS



Protect. Enhance. Outperform.



The recommendations and information in this chart/document are for the application of Durex® products manufactured by Durabond, and are based on practical knowledge for general site conditions and uses. This chart is to be used as a reference guide only to identify and display the various products for general, non-site specific applications for a variety of installations. Differences in site conditions, preparations, materials are continuously variable and unknown.

As such, no warranty, guarantee or legal binding relationship is implied whatsoever with these products and systems and no guarantee can be made to their performance. In addition, preparation and condition of the substrate is of such utmost importance that a Durabond Technical Representative must be notified prior to installation of any of the aforementioned products and/or systems.

An installer must always prepare the surface to the recommendations found on the current data sheet of each product written and produced by Durabond Technical Coatings Limited. These data sheets can be obtained from Durabond's website, www.durabond.com, or by contacting a Technical Sales Representative directly.

TORONTO OFFICE

55 Underwriters Road, Toronto, ON M1R 3B4
T (416) 759-4474 | **F** (416) 759-4470

MISSISSAUGA OFFICE

6178 Netherhart Road, Mississauga, ON L5T 1B7
T (905) 565-9283 | **F** (905) 565-9365

WESTERN CANADA OFFICE

14604 124 Ave NW, Edmonton, AB T5L 3B3
T (780) 451-6364 | **F** (780) 453-9056

TOLL FREE

TF 1 877 387-2266 | **E** info@durabond.com

durabond.com